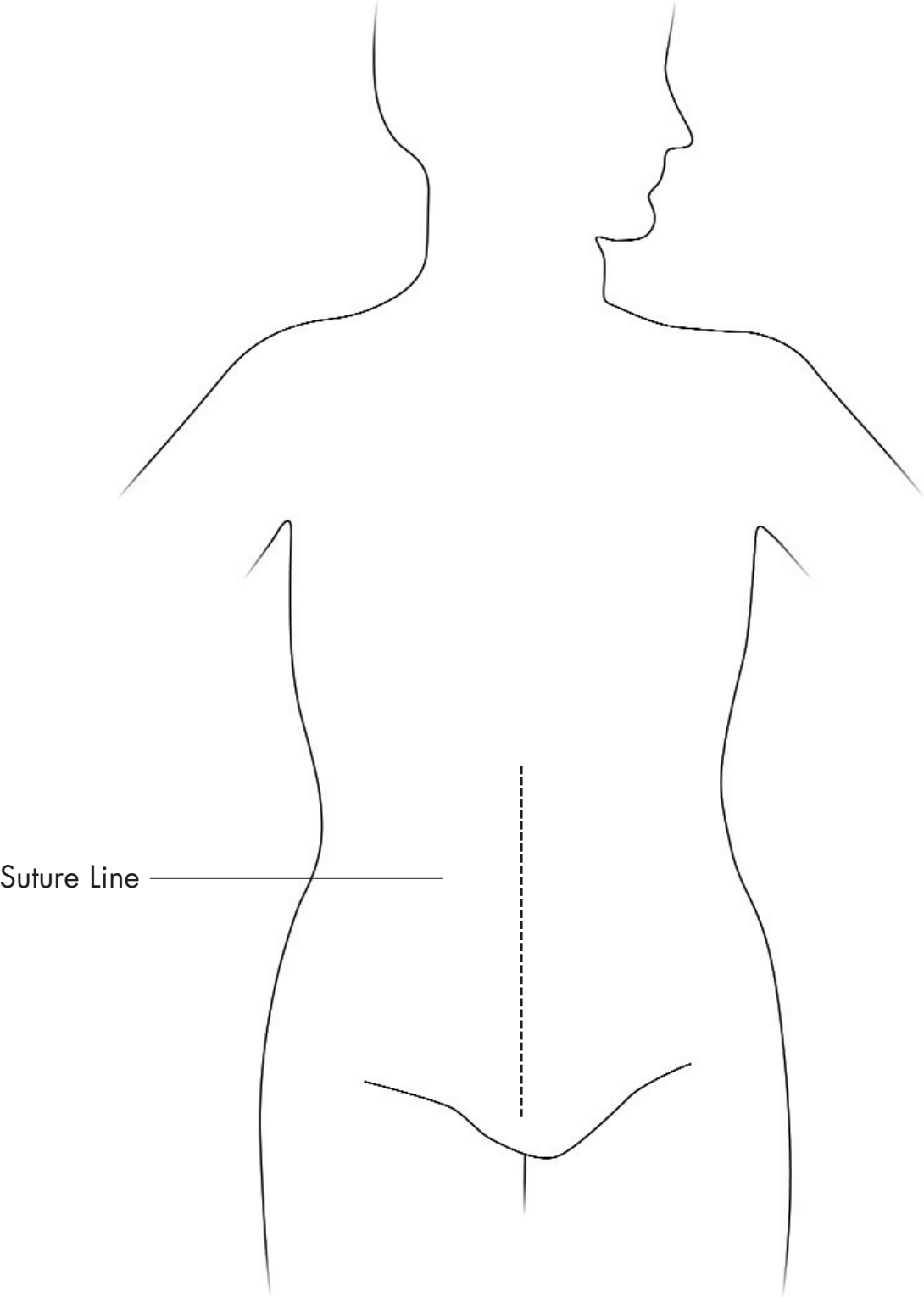


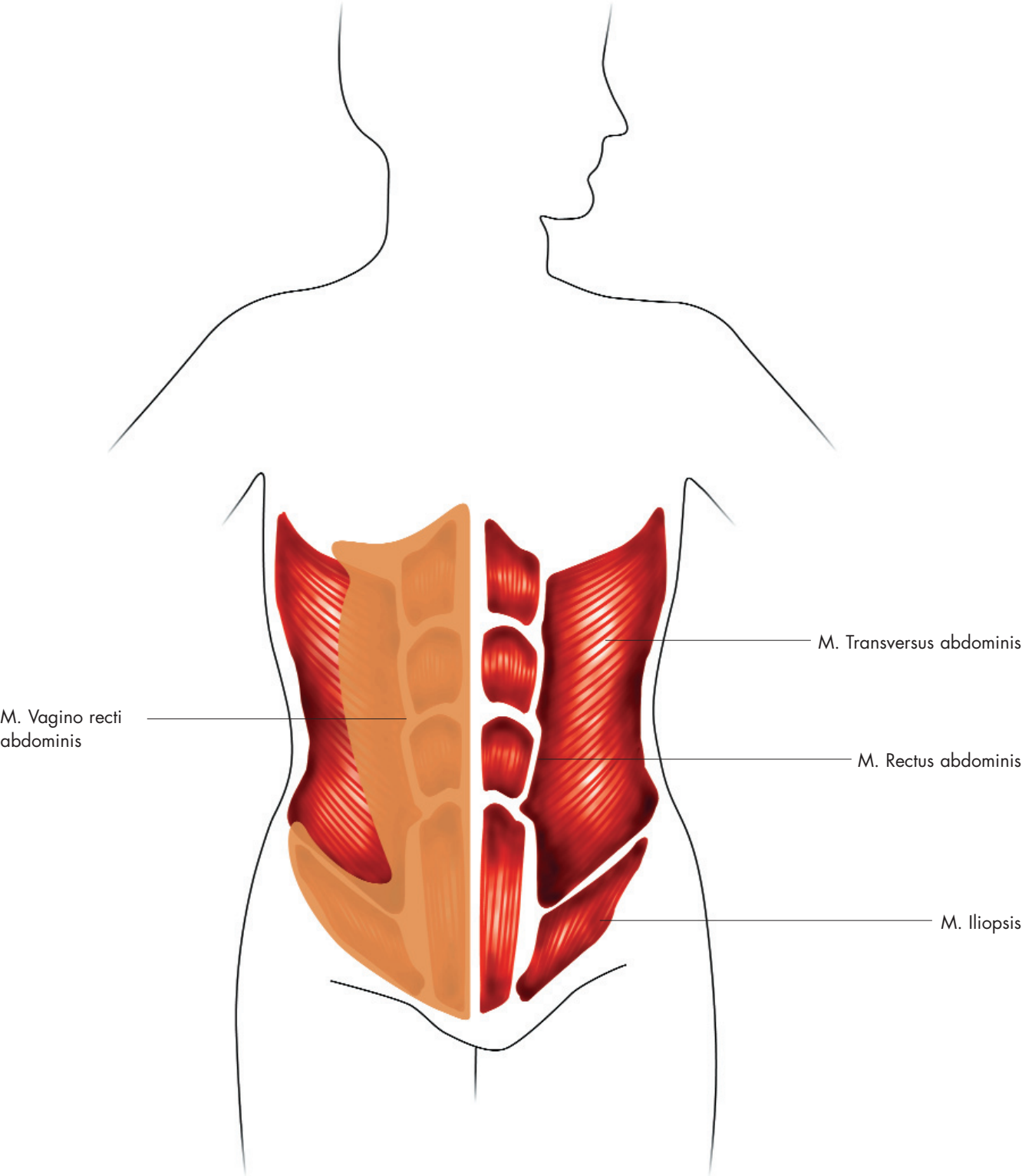


## Anatomical Stoma Chart

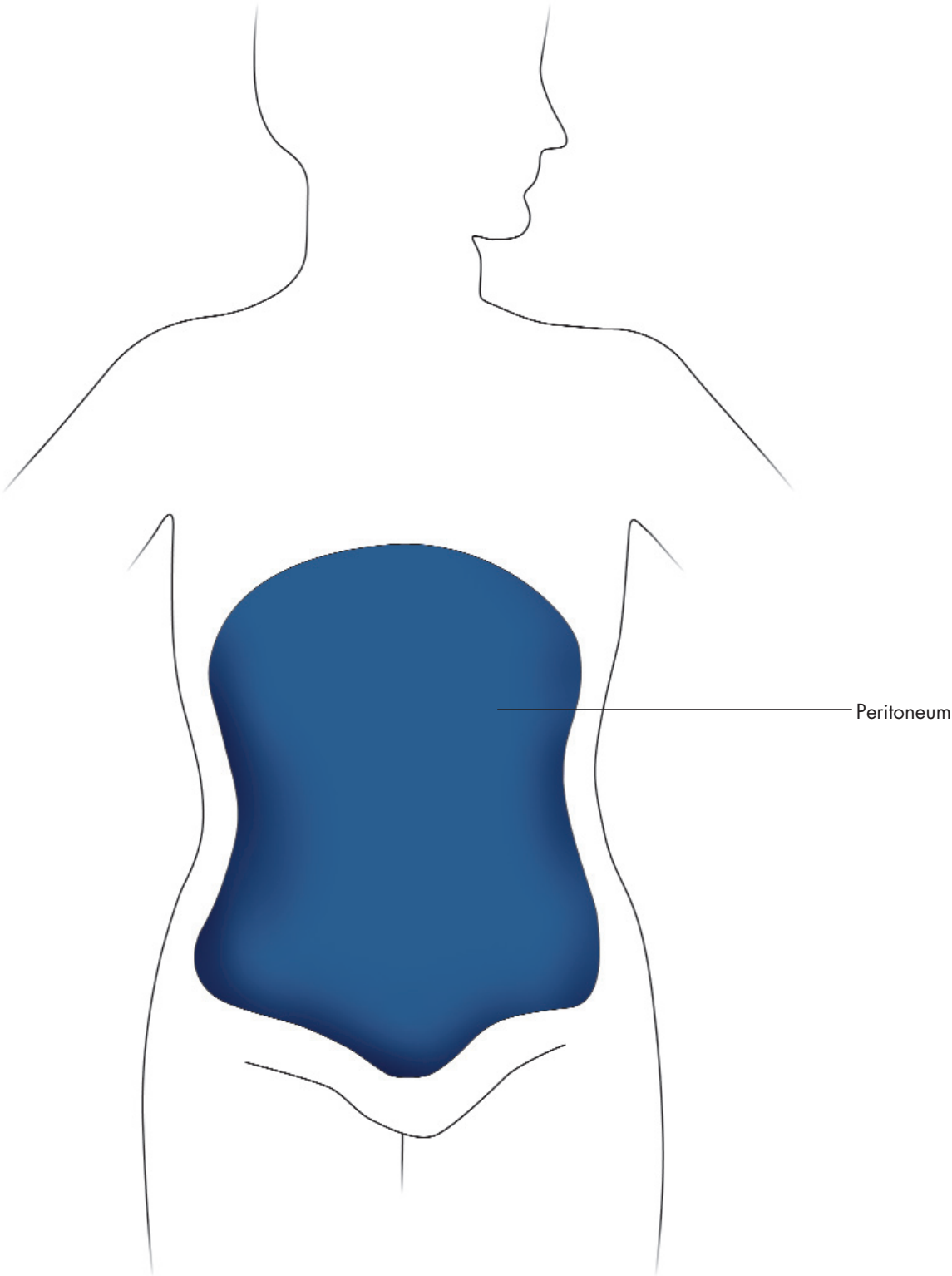
Surgical incision



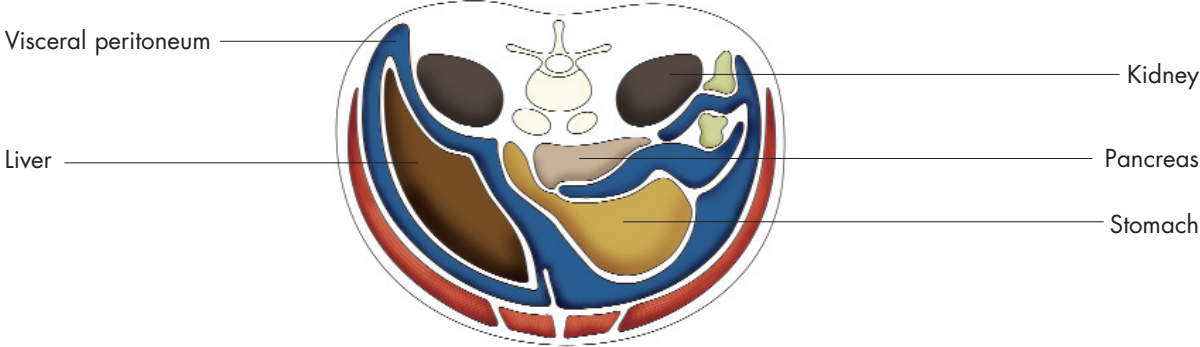
# Abdominal Muscles



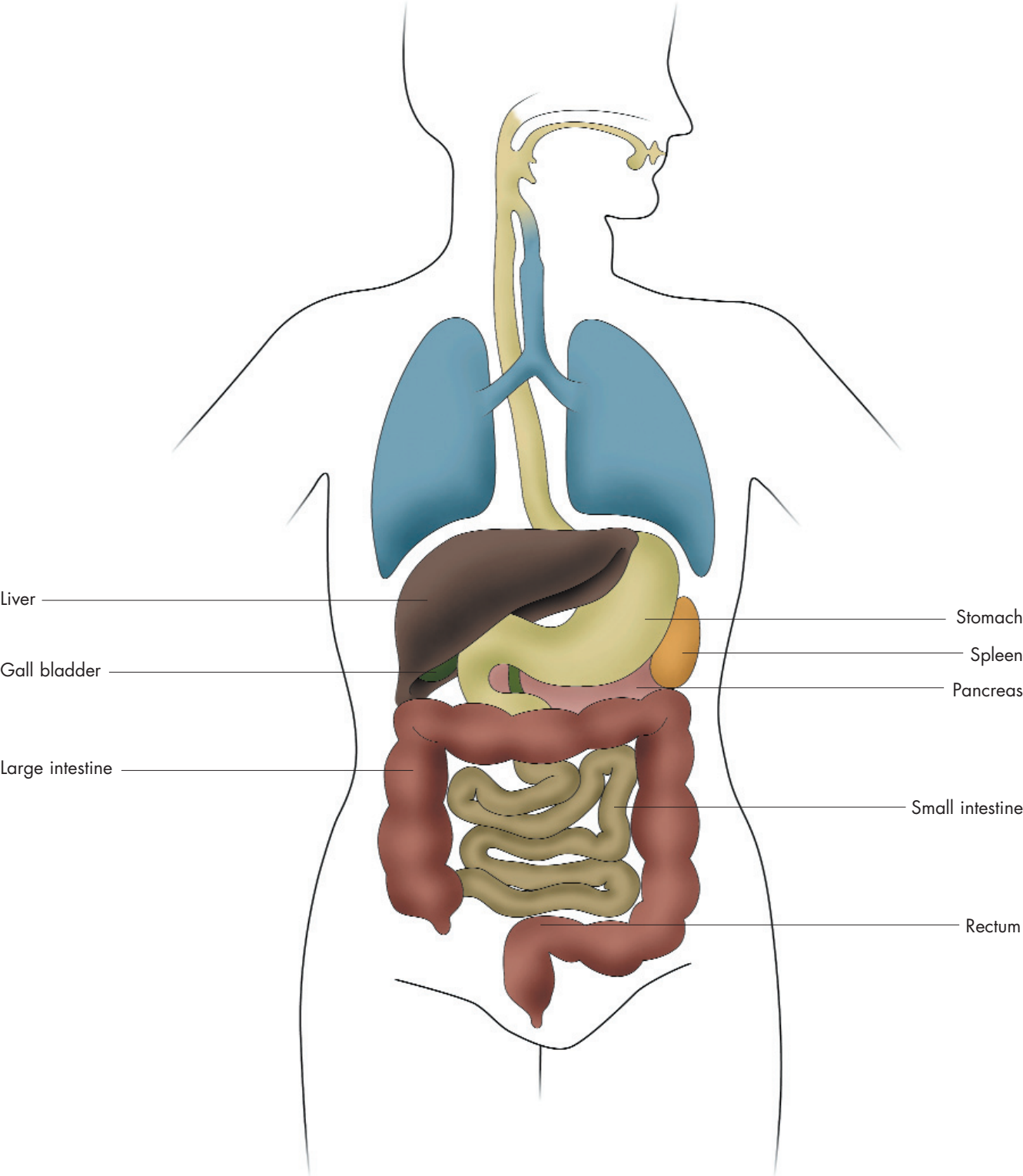
# Peritoneum



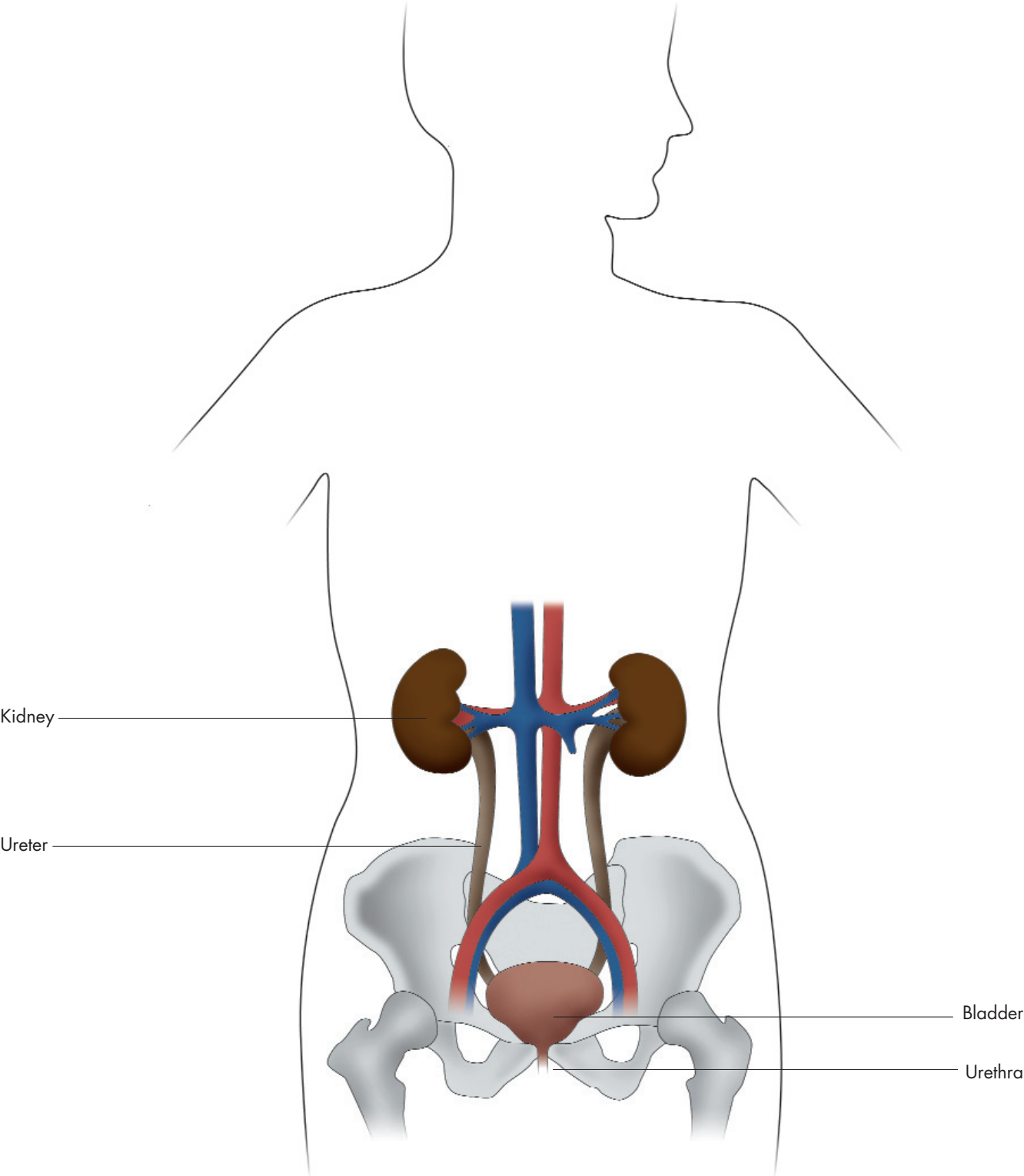
# Cross section of peritoneum



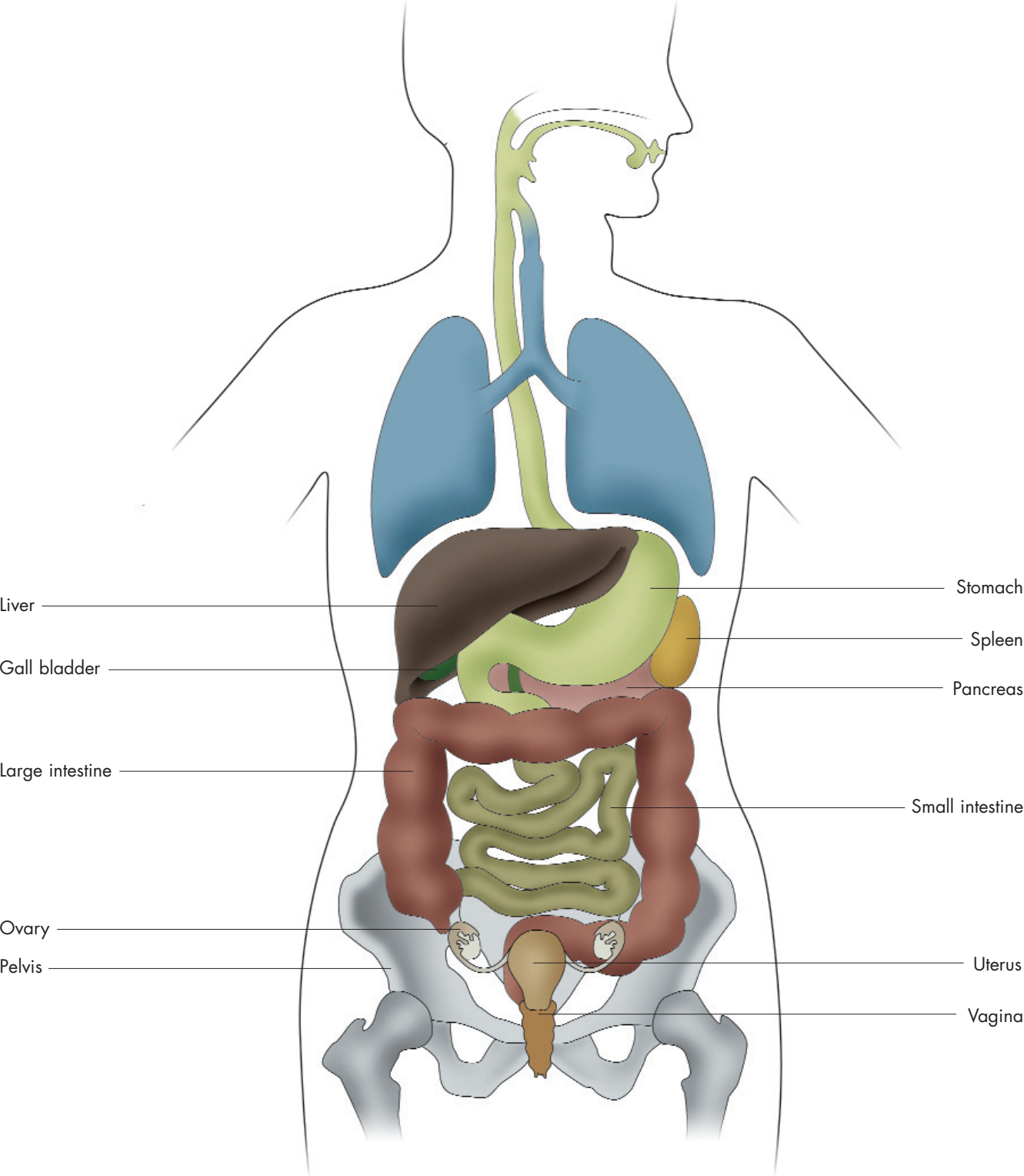
# The Digestive System/gastrointestinal tract



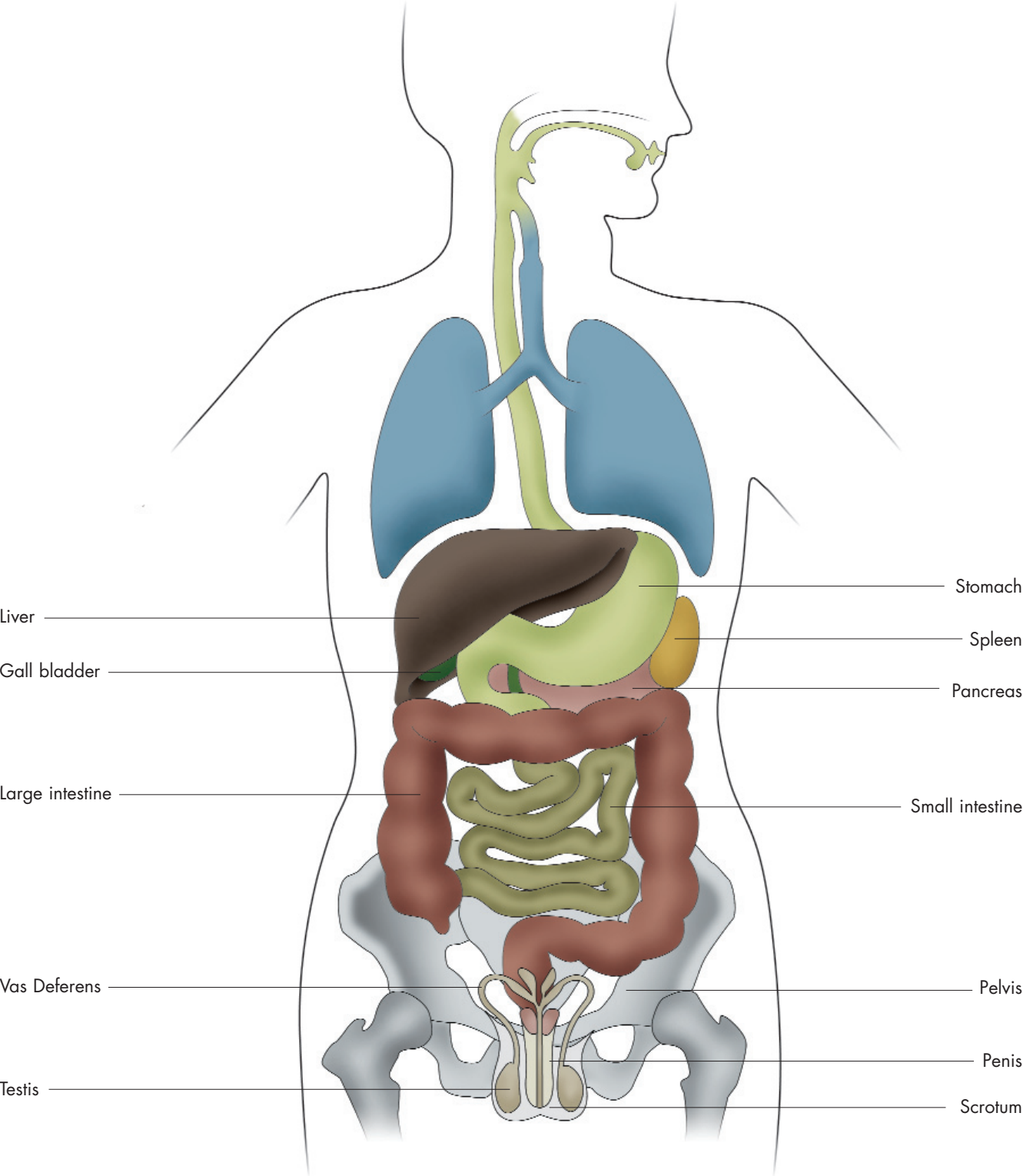
# The Renal System



# Digestive system/female reproductive organs

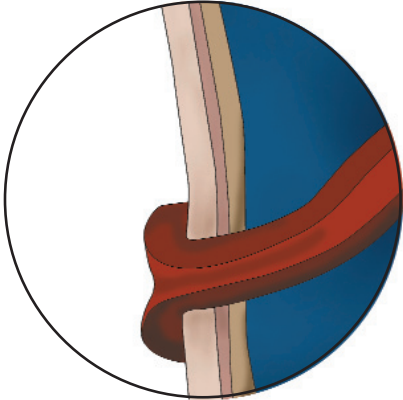
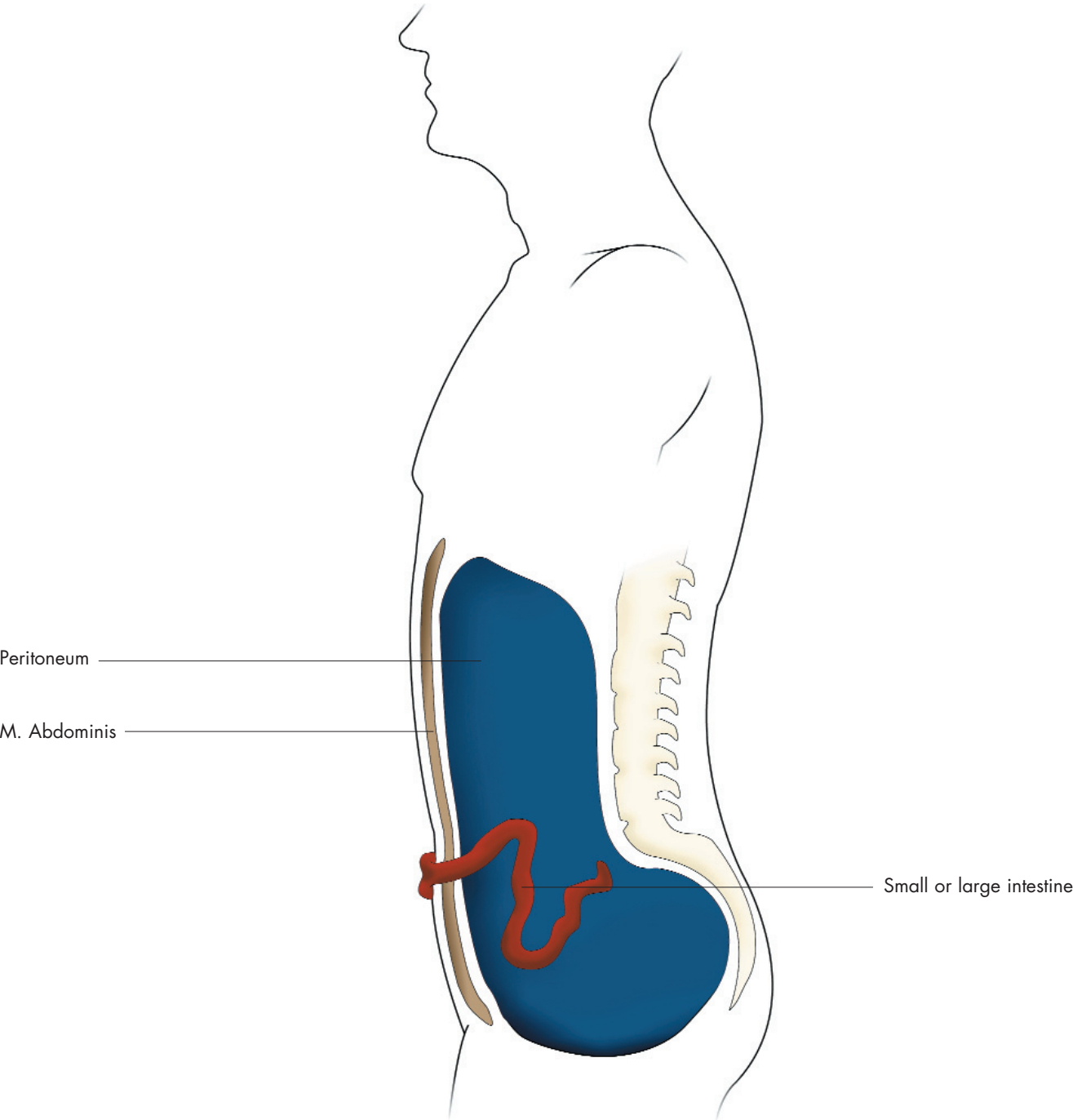


# Digestive system/male reproductive organs





Side view



**Dedicated to Stoma care**

Dansac is continually developing new solutions based on the wishes and demands of stoma users and nurses. To encourage dialogue and break down taboos, new information is being compiled for patients and their families in collaboration with stoma professionals around the world.